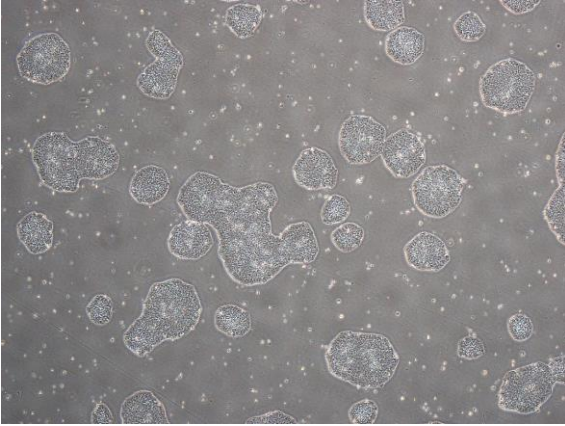
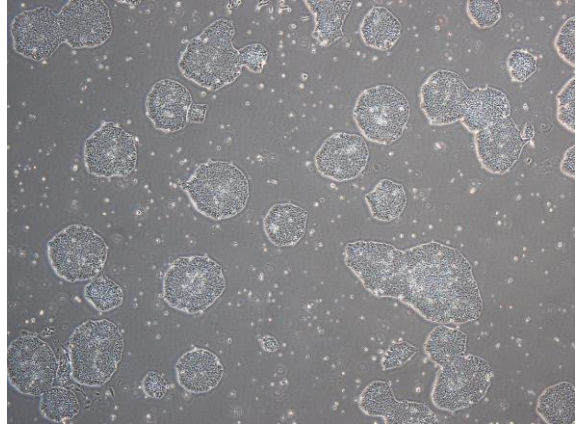


## 【 CiRA-j-1012 】 Morphology of iPSC colonies

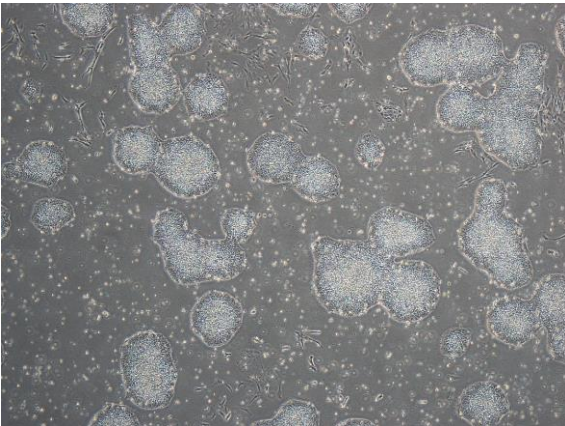
CiRA-j-1012-A: passage-2



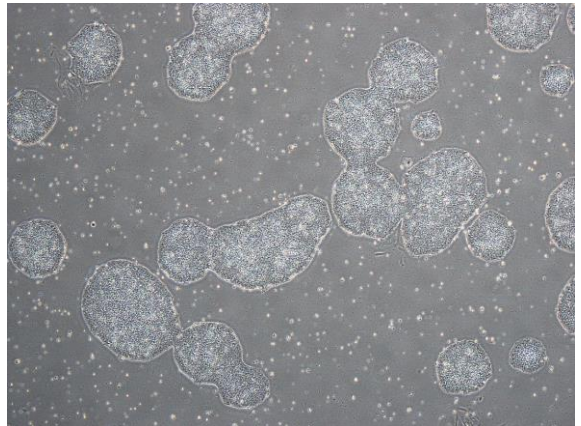
CiRA-j-1012-B: passage-2



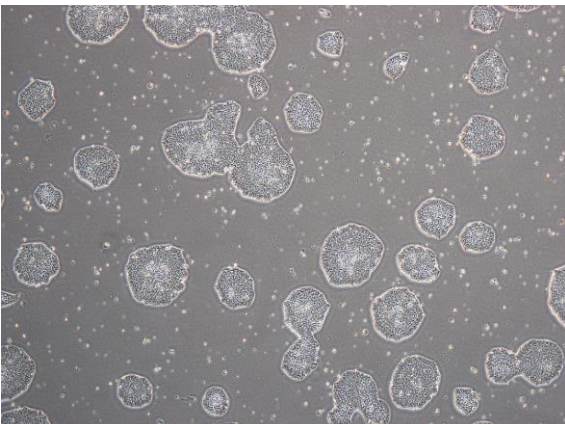
CiRA-j-1012-C: passage-2



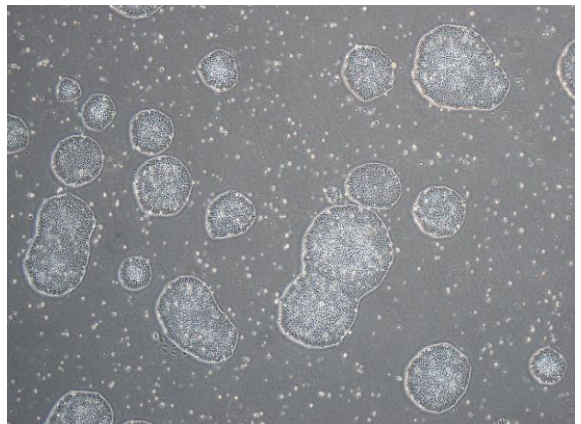
CiRA-j-1012-D: passage-2



CiRA-j-1012-E: passage-2



CiRA-j-1012-F: passage-2



( All images were captured at 4x magnification )